



# MONTHLY MEMBERSHIP PROGRESS REPORT

District 3232B1

Results as of: 11/30/2018

GMT: JAYESH THAKKAR

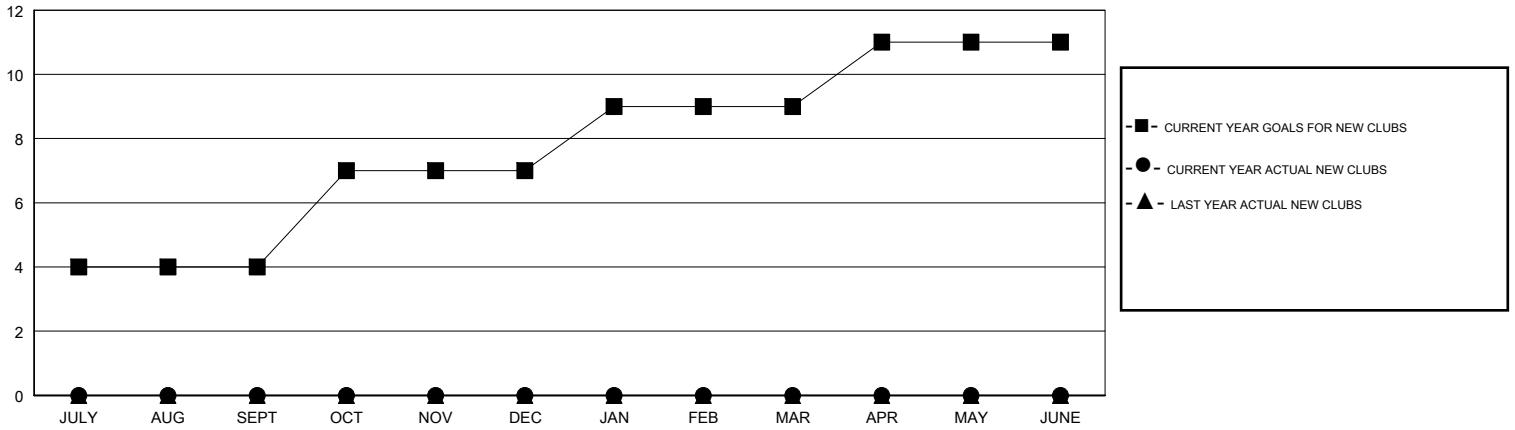
LOCATION INDIA

GMT CA

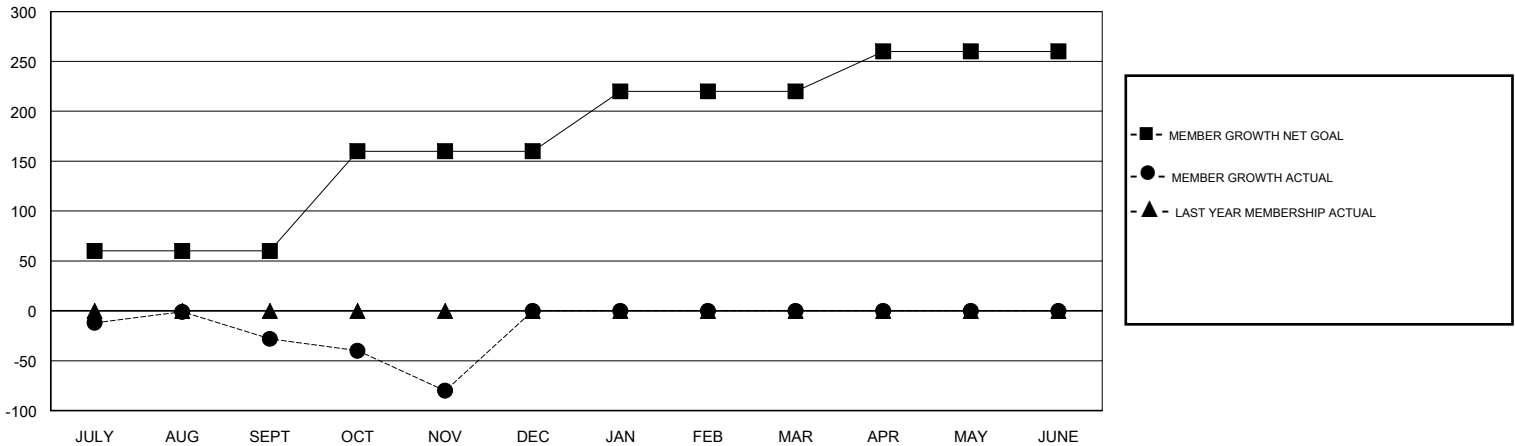
Clubs			
RESULTS FOR 2018-2019			
QUARTER	NEW CLUB GOAL	NEW CLUBS	DROPPED CLUBS
JULY/AUG/SEPT	4	0	0
OCT/NOV/DEC	3	0	0
JAN/FEB/MAR	2	0	0
APR/MAY/JUNE	2	0	0

Members			
RESULTS FOR 2018-2019			
QUARTER	MEMBER GROWTH NET GOAL	MEMBER GROWTH ACTUAL	DROPPED MEMBERS ACTUAL (including transfers)
JULY/AUG/SEPT	60	33	54
OCT/NOV/DEC	100	5	57
JAN/FEB/MAR	60	0	0
APR/MAY/JUNE	40	0	0

GOALS AND ACTUAL NEW CLUBS CUMULATIVE



GOALS AND ACTUAL MEMBERS CUMULATIVE



DROPPED CLUBS: 0
------------------

11 CLUBS OF 63 ADDED 1 OR MORE NEW MEMBERS

GENDER DISTRIBUTION	
MALE	2,415 (69.10%)
FEMALE	1,080 (30.90%)
Women Percentage Fiscal Year Goal: 35%	

DROPPED MEMBERS	
DECEASED	2
CLUB CANCELLED	0
OTHER	109
<b>TOTAL</b>	<b>111</b>

[CLICK HERE FOR CUMULATIVE MEMBERSHIP DATA](#)

TOTAL FAMILY UNIT MEMBERS	2,426
FAMILY MEMBERS PAYING HALF DUES	1,735